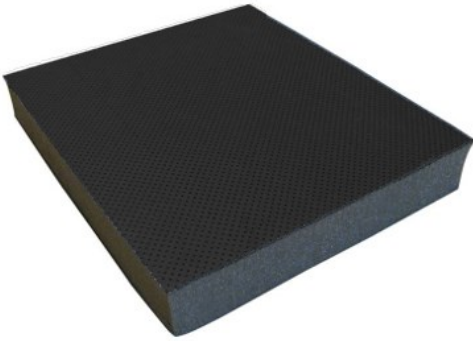


# PD BLACK



Perforated black coloured PVC facing and absorbing polyurethane foam.

Measurements according to UNE-EN ISO 140-3 standard (December 1995)  
Acoustic Isolation of Construction Materials in Laboratory Measurements.  
Corresponds completely with ISO 140-3(1995) standard.  
Cancels and substitutes UNE 74-040/3 (1984) standard.  
Calculations according to NBECA88.

Tipo	Codice	autoadesive	Rw (dB)	Peso (kg)
PD-15 black sheet	26381	-	10	1,113
PD-15 A black sheet	26382	✓	10	1,113
PD-15 roll black	26383	-	10	1,113
PD-15 A roll black	26384	✓	10	-
PD-25 black sheet	26385	-	8	1,113
PD-25 A black sheet	26386	✓	8	1,113
PD-25 roll black	26387	-	8	1,113
PD-25 A roll black	26388	✓	8	-
PD-40 black sheet	26389	-	18	1,113
PD-40 A black sheet	26390	✓	18	1,113
PD-40 roll black	26391	-	18	1,113
PD-40A roll black	26392	✓	18	-

## CARATTERISTICHE TECNICHE

- **Composition**  
Perforated black coloured PVC facing and absorbing polyurethane foam.
- **Thicknesses**  
15mm 25mm 40mm

## FORMATS

- **Sheets**  
1200x1000 mm  
15mm thick, 8 Sheets per box.  
25mm thick, 5 Sheets per box.  
40mm thick, 3 Sheets per box.
- **Rolls**  
15mm thick, 1500mm wide x approx. 25m long  
25mm thick, 1500mm wide x approx. 25m long  
40mm thick, 1500mm wide x approx. 20m long

## APPLICAZIONI

Revestimiento interior de cabinas insonorizadas o de vehículos, buena absorción.