

Anti vibration  
mounts

# 4V-SH ANTI SEISMIC MOUNTS



- A spring with high elasticity and very low natural frequency
- An incorporated levelling system
- A Sylomer pad under the mount base in order to isolate mid-high frequencies comes standard

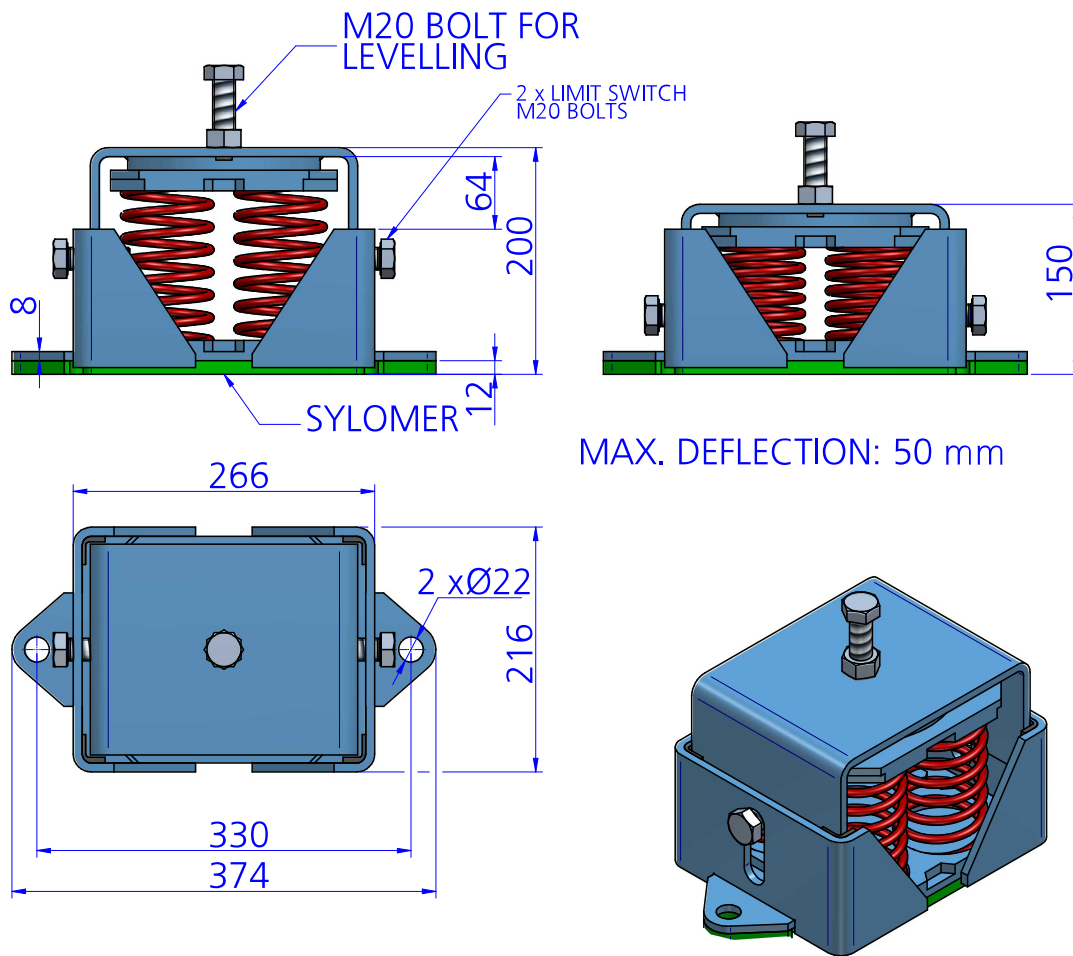
## TECHNICAL CHARACTERISTICS

The mounts are able to reach low natural frequencies from 2 to 5 Hz. The spring combined with sylomer® is able to provide high isolation at low and medium frequencies.

The curves are showing the deflection and natural frequencies according to the load of the spring. Temperature working range from -30 to 70°. Short term higher temperatures are possible.



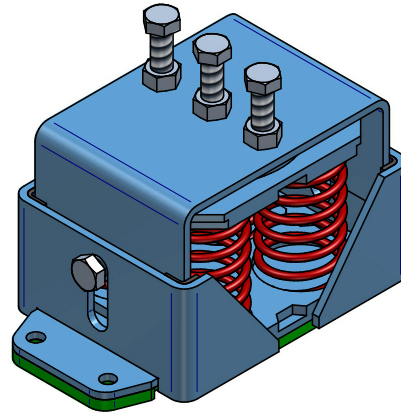
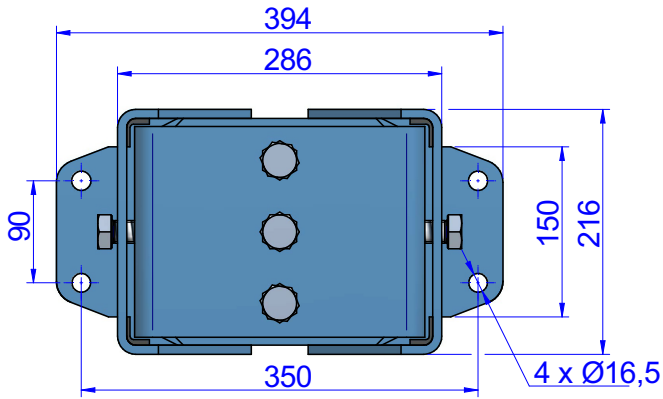
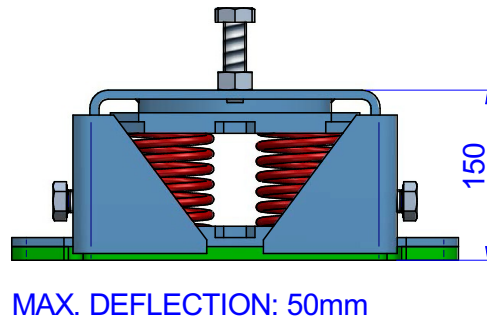
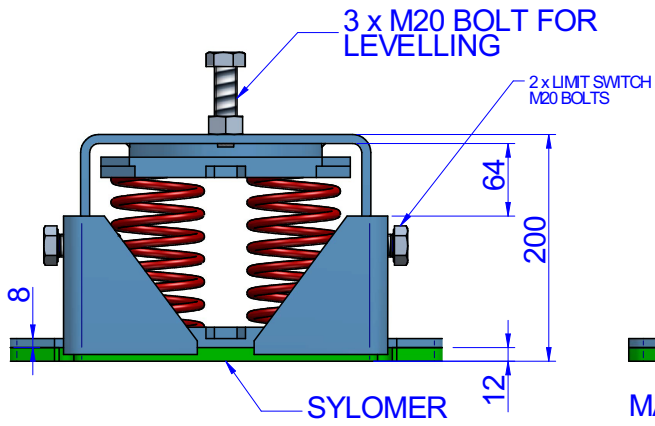
DRAWINGS



DIMENSIONS

Type	Spring color	Max. Load (kg)	Weight (kg)	K (N/mm)	Code
4V-SH ANTI SEISMIC + SYLOMER	BLUE	268	19,909	54	20752
	WHITE	380	20,137	74	20753
	BLACK	492	20,233	100	20754
	BEIGE	692	20,593	138	20755
	RED	892	22,077	172	20756
	GREY	1340	22,881	274	20757
	GREEN	1784	23,945	351	20758
	BROWN	2800	29	601	20759

DRAWINGS

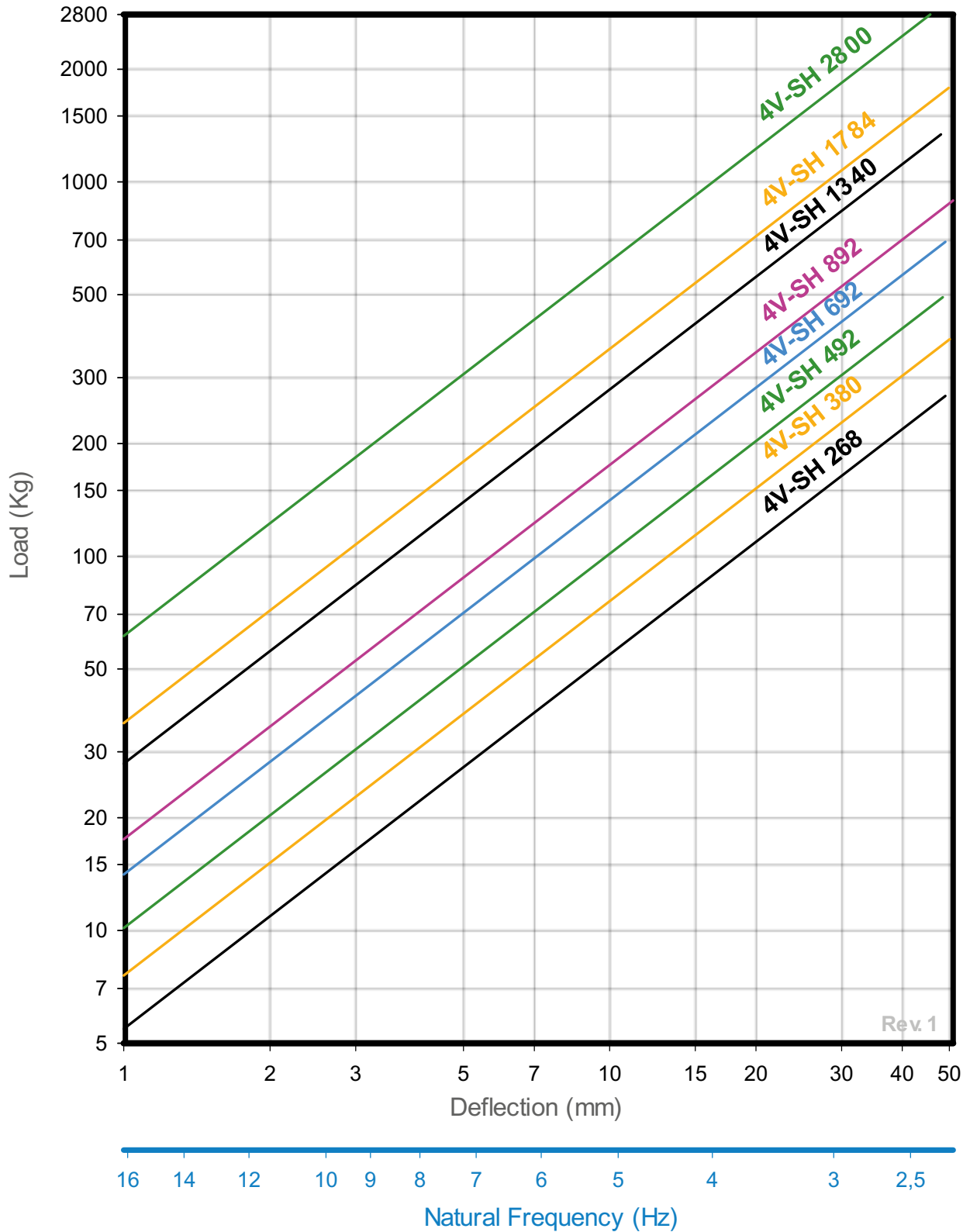


DIMENSIONS

Type	Spring color	Max. Load (kg)	Weight (kg)	K (N/mm)	Code
4V-SH ANTI SEISMIC + SYLOMER 4 Holes	BLUE	268	0	54	21584
	WHITE	380	0	74	21585
	BLACK	492	0	100	21586
	BEIGE	692	0	138	21587
	RED	892	0	172	21588
	GREY	1340	0	274	21589
	GREEN	1784	0	351	21590
	BROWN	2800	0	601	21591

Elastical properties

**LOAD DEFLECTION GRAPH  
AMC MECANOCAUCHO® 4V-SH**



Rev. 1