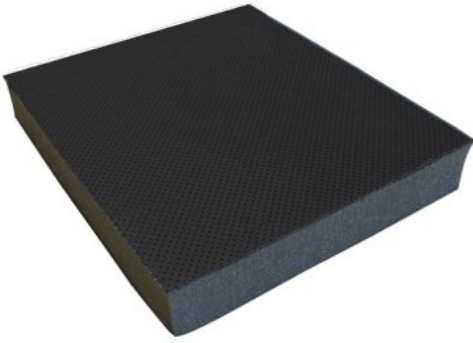


PD BLACK



Perforated black coloured PVC facing and absorbing polyurethane foam.

Measurements according to UNE-EN ISO 140-3 standard (December 1995)
Acoustic Isolation of Construction Materials in Laboratory Measurements.
Corresponds completely with ISO 140-3(1995) standard.
Cancels and substitutes UNE 74-040/3 (1984) standard.
Calculations according to NBECA88.

Type	Code	SELF-ADHESIVE	Rw (dB)	Weight (kg)
PD-15 black sheet	26381	-	10	1,113
PD-15 A black sheet	26382	✓	10	1,113
PD-15 roll black	26383	-	10	1,113
PD-15 A roll black	26384	✓	10	-
PD-25 black sheet	26385	-	8	1,113
PD-25 A black sheet	26386	✓	8	1,113
PD-25 roll black	26387	-	8	1,113
PD-25 A roll black	26388	✓	8	-
PD-40 black sheet	26389	-	18	1,113
PD-40 A black sheet	26390	✓	18	1,113
PD-40 roll black	26391	-	18	1,113
PD-40A roll black	26392	✓	18	-

TECHNICAL CHARACTERISTICS

- **Composition**
Perforated black coloured PVC facing and absorbing polyurethane foam.
- **Thicknesses**
15mm 25mm 40mm

FORMATS

- **Sheets**
1200x1000 mm
15mm thick, 8 Sheets per box.
25mm thick, 5 Sheets per box.
40mm thick, 3 Sheets per box.
- **Rolls**
15mm thick, 1500mm wide x approx. 25m long
25mm thick, 1500mm wide x approx. 25m long
40mm thick, 1500mm wide x approx. 20m long

APPLICATIONS

Interior lining soundproof cabins or vehicles, good absorption.