

DRD ANTI VIBRATION MOUNTS



The AMC-MECANOCAUCHO® type DRD anti vibration mounts have low axial and radial stiffness rates. Their design makes them ideal for those machines that produce vibrations in 3 axes. The design of these mounts is similar to the DSD mounts, but the rubber section has a higher profile. This feature makes them lower stiffness rate mounts compared to the DSD types. DRD mounts are particularly useful for those applications where much improved vibration isolation is required .

TECHNICAL CHARACTERISTICS

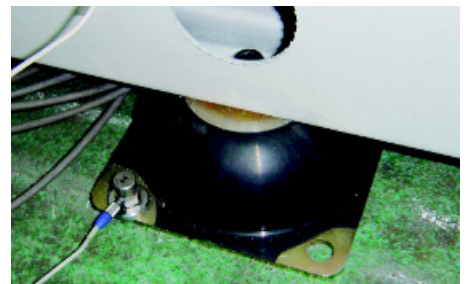
The DRD mounts by MECANOCAUCHO® have the following characteristics.

- The metal parts are protected from corrosion by an electrolytic coating for outdoor work. RoHs compliant.
- We engrave the rubber hardness on the metal parts.

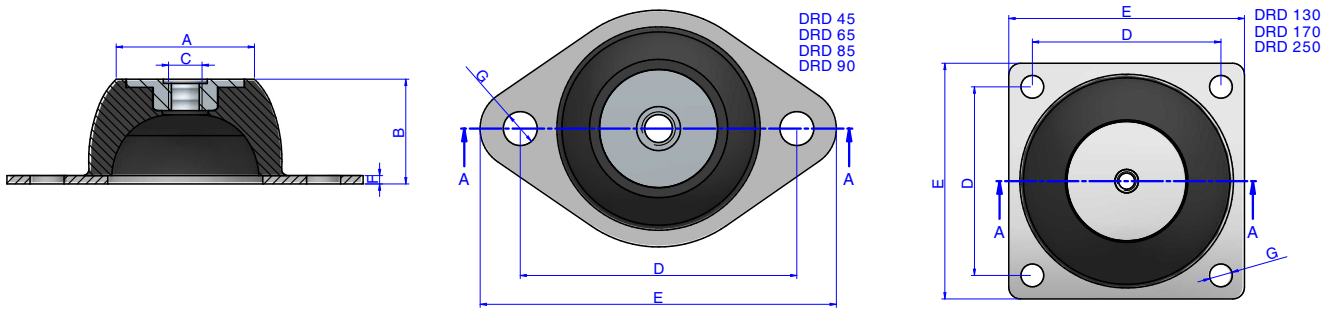
APPLICATIONS

The D.R.D. mounts are ideal for light machinery operating at medium to low excitation frequencies.

- Compressors.
- Air-conditioners.
- Ventilators.
- Vibrating Tables.



DRAWINGS

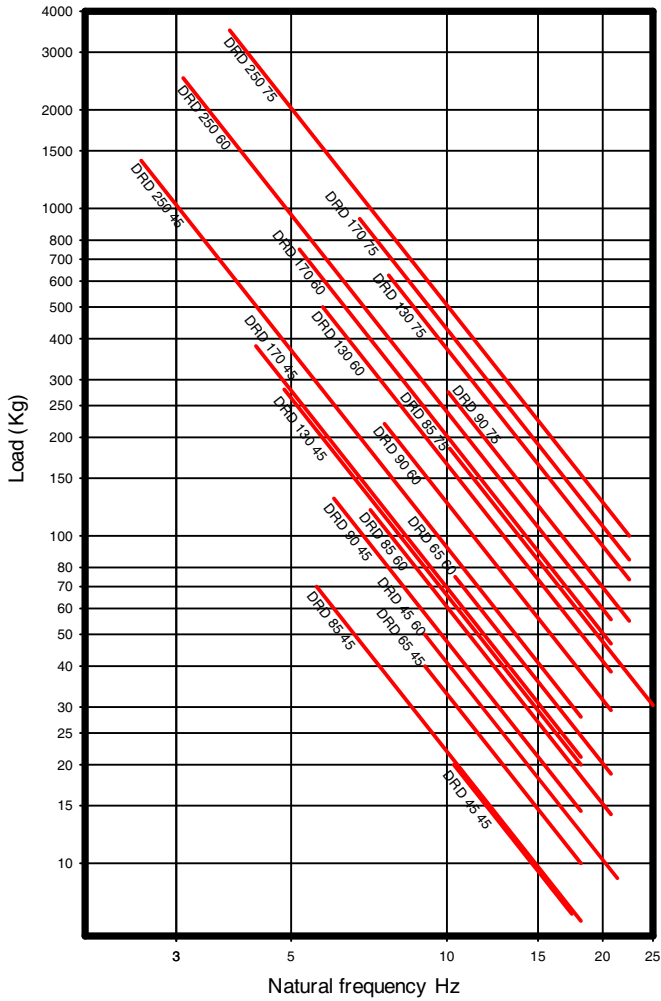


DIMENSIONS

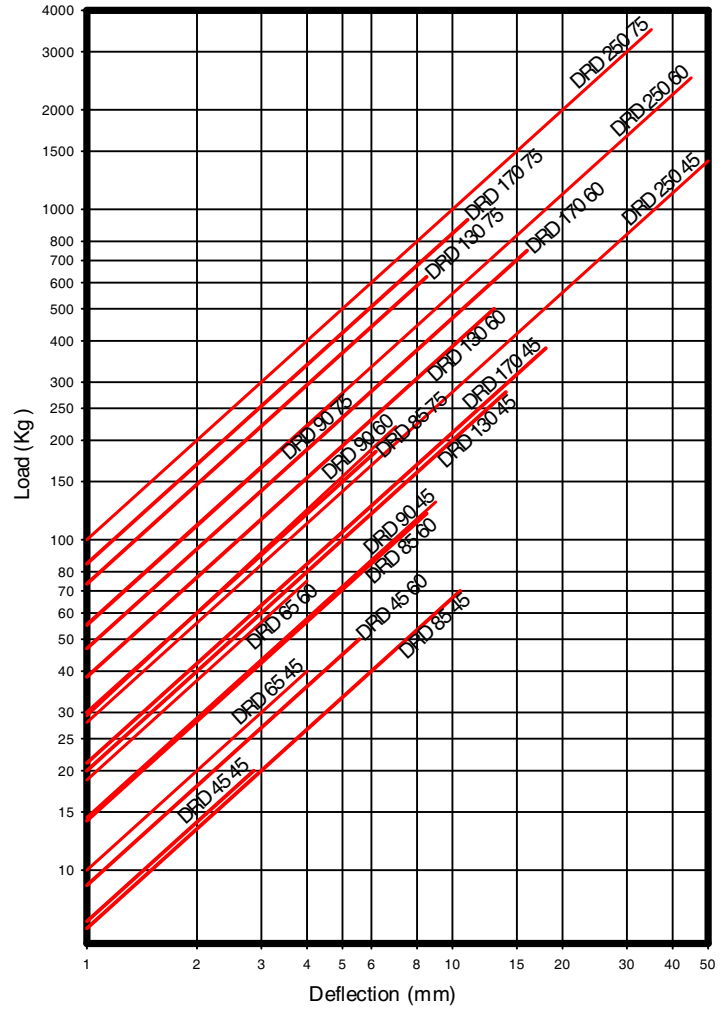
Type	A (mm)	B (mm)	C (mm)	D (mm)	E (mm)	F (mm)	G (mm)	Weight (gr.)	Load (kg)	Shore	Code
DRD 45	33	25	M-8	66	85	2	8	70	20	45 Sh	175081
									50	60 Sh	175083
DRD 65	52	35	M-10	92	114	2,5	10,5	170	40	45 Sh	175001
									75	60 Sh	175002
DRD 85	52	40	M-10	110	136	3	11,5	303	75	45 Sh	175003
									120	60 Sh	175004
									185	75 Sh	175013
DRD 90	57,5	45	M-10	125	150	3	12,5	430	130	45 Sh	175021
									220	60 Sh	175022
									275	75 Sh	175023
DRD 130	78	63,5	M-12	120	150	5	14,5	1080	280	45 Sh	175031
									500	60 Sh	175032
									625	75 Sh	175033
DRD 170	100	84	M-16	160	200	4	14,5	2390	380	45 Sh	175036
									750	60 Sh	175037
									930	75 Sh	175038
DRD 250	187	158	M-24	250	310	6	18,5	10400	1400	45 Sh	175041
									2500	60 Sh	175042
									3150	75 Sh	175044

Elastical properties

**NATURAL FREQUENCIES A MC
MECANOCAUCHO® Type DRD**



**LOAD DEFLECTION GRAPHS
MECANOCAUCHO® Type DRD**



OPERATION AND ASSEMBLY



The design of the mount allows an easy installation. The top metal part has an inside thread for securing to the machine, the baseplate has 2/4 holes that allow an easy fixation to the frame. Oil anti-drip hoods can be supplied on demand.