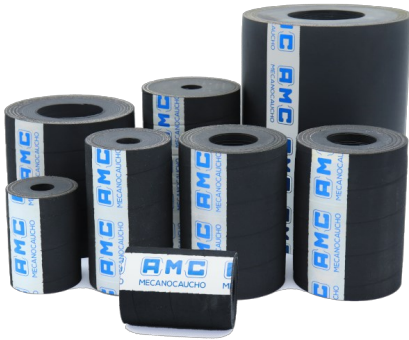


REINFORCED ELASTOMERIC SPRINGS



These fabric and rubber springs will provide a long life, greater productivity, fast replacement time and virtually maintenance free operation.

They can be used as a replacement for steel coil springs or an additional anti-vibration device. Unlike coil springs they will not deteriorate in humid or corrosive environments.

TECHNICAL CHARACTERISTICS

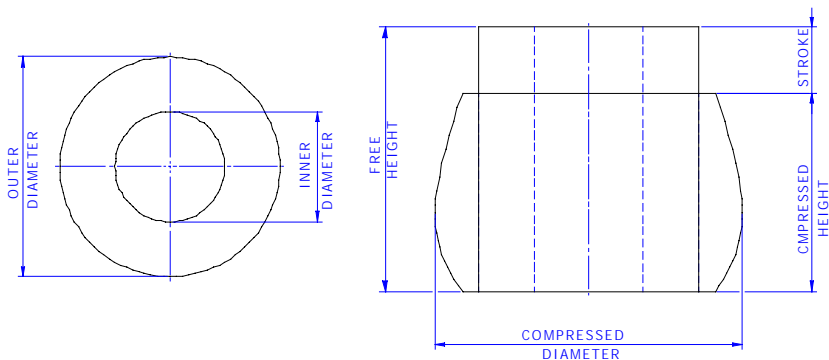
Low natural frequencies provide excellent isolation of forced frequencies. Using these type of products will also provide major noise and vibration reduction in the equipment being used, therefore increasing equipment lifespan.

The reinforced elastomeric springs have a recommended working temperature range of -40°C to +75°.



REINFORCED ELASTOMERIC SPRINGS

DRAWINGS

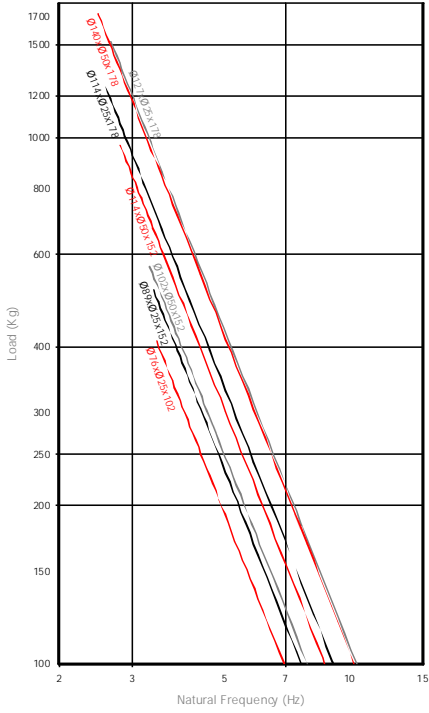


DIMENSIONS

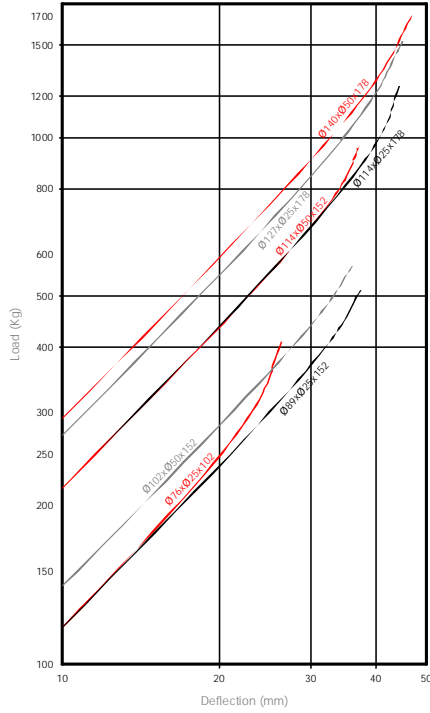
| Type | Øext (mm) | Øint (mm) | Free Height (mm) | Load kg MIN | Compressed Height kg min (mm) | Freq. Hz. MIN Load | Load kg MAX | Compressed Height kg max (mm) | Freq. Hz. MAX Load | Code |
|--------------------------------|-----------|-----------|------------------|-------------|-------------------------------|--------------------|-------------|-------------------------------|--------------------|--------|
| Reinforced elastomeric springs | 41,3 | 16 | 44,5 | 48 | 38 | 3,72 | 120 | 32 | 7 | 171322 |
| | 41,3 | 16 | 89 | 49 | 75 | 4,08 | 100 | 64 | 3,92 | 171323 |
| | 76 | 25 | 102 | 192 | 86 | 3,99 | 409 | 74 | 4,52 | 171300 |
| | 89 | 25 | 152 | 250 | 130 | 3,21 | 513 | 112 | 3,28 | 171303 |
| | 102 | 50 | 152 | 284 | 130 | 3,21 | 569 | 112 | 3,14 | 171302 |
| | 114 | 50 | 152 | 483 | 130 | 3,37 | 968 | 114 | 3,4 | 171304 |
| | 114 | 25 | 178 | 636 | 152 | 3,23 | 1253 | 133 | 3,34 | 171305 |
| | 127 | 25 | 178 | 663 | 152 | 3,87 | 1525 | 129 | 4,05 | 171306 |
| | 140 | 50 | 178 | 746 | 152 | 3,4 | 1714 | 129 | 3,07 | 171309 |
| | 152 | 76 | 152 | 745 | 130 | 3,42 | 1799 | 112 | 3,2 | 171307 |
| | 165 | 76 | 203 | 890 | 173 | 3,03 | 1883 | 152 | 3,14 | 171308 |
| | 152 | 25 | 152 | 1018 | 130 | 3,9 | 2489 | 112 | 3,77 | 171310 |
| | 191 | 89 | 203 | 1143 | 173 | 2,3 | 2815 | 147 | 3,24 | 171314 |
| | 191 | 89 | 254 | 1138 | 216 | 2,66 | 2668 | 184 | 2,96 | 171315 |
| | 203 | 50 | 203 | 1407 | 173 | 3,56 | 3863 | 152 | 3,15 | 171316 |
| 279 | 51 | 152 | 3718 | 130 | 3,66 | 9070 | 110 | 3,40 | 171320 | |

Elastical properties

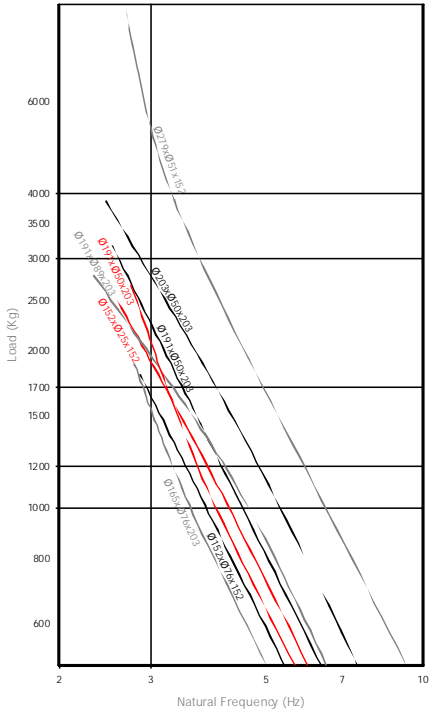
NATURAL FREQUENCY
AMC MECANOCUCHO® REINFORCED
ELASTOMERIC SPRINGS Ø76 - Ø140



LOAD DEFLECTION GRAPH
AMC MECANOCUCHO® REINFORCED
ELASTOMERIC SPRINGS Ø76 - Ø140



NATURAL FREQUENCY
AMC MECANOCUCHO® REINFORCED
ELASTOMERIC SPRINGS Ø152 - Ø279



LOAD DEFLECTION GRAPH
AMC MECANOCUCHO® REINFORCED
ELASTOMERIC SPRINGS Ø152 - Ø279

