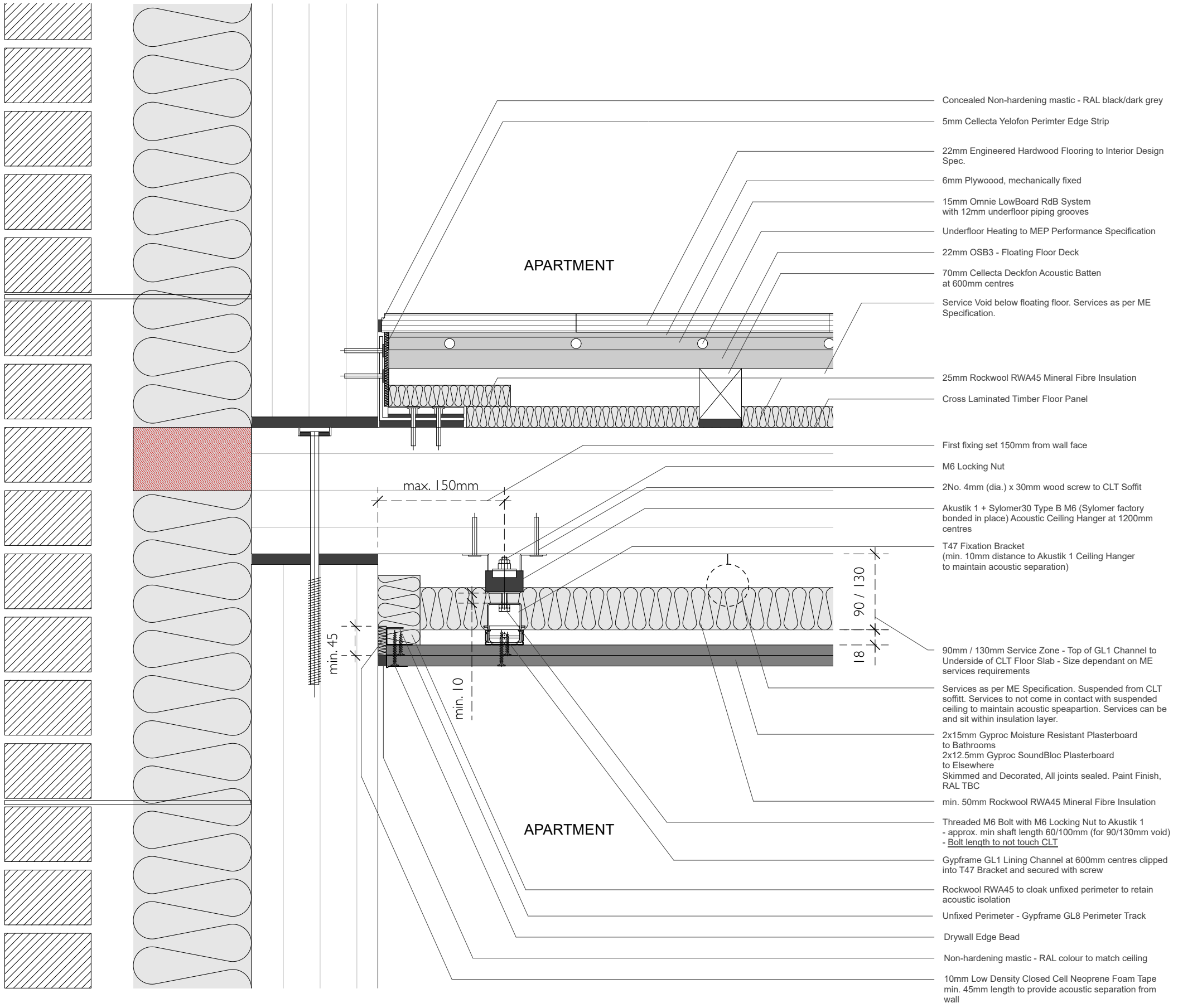


Notes

- Drawing to be read in conjunction with:
- 130 L(21) 100 Series - Plans
 - 130 L(21) 200 Series - Sections
 - 130 L(21) 300 Series - Elevations
 - Structural Engineer's Drawings and Specifications
 - ME Engineer's Specifications
 - Fire Engineer's Detailed Fire Startagey Report
 - Interior Design Specification
- Refer to drawings:
- 130 A(21)001 Construction Build Up - External Wall
 - 130 A(22)001 Construction Build Up - Party Wall
 - 130 A(22)002 Construction Build Up - Partition Wall
 - 130 A(23)002 Construction Build Up - Int. Floor
 - 130 A(23)003 Construction Build Up - Int. Floor
 - 130 A(27)001 Construction Build Up - Roof

EXTERNAL



APARTMENT

APARTMENT

- Concealed Non-hardening mastic - RAL black/dark grey
- 5mm Collecta Yelofon Perimter Edge Strip
- 22mm Engineered Hardwood Flooring to Interior Design Spec.
- 6mm Plywood, mechanically fixed
- 15mm Omnie LowBoard RdB System with 12mm underfloor piping grooves
- Underfloor Heating to MEP Performance Specification
- 22mm OSB3 - Floating Floor Deck
- 70mm Collecta Deckfon Acoustic Batten at 600mm centres
- Service Void below floating floor. Services as per ME Specification.
- 25mm Rockwool RWA45 Mineral Fibre Insulation
- Cross Laminated Timber Floor Panel
- First fixing set 150mm from wall face
- M6 Locking Nut
- 2No. 4mm (dia.) x 30mm wood screw to CLT Soffit
- Akustik 1 + Sylomer30 Type B M6 (Sylomer factory bonded in place) Acoustic Ceiling Hanger at 1200mm centres
- T47 Fixation Bracket (min. 10mm distance to Akustik 1 Ceiling Hanger to maintain acoustic separation)
- 90mm / 130mm Service Zone - Top of GL1 Channel to Underside of CLT Floor Slab - Size dependant on ME services requirements
- Services as per ME Specification. Suspended from CLT soffit. Services to not come in contact with suspended ceiling to maintain acoustic speparation. Services can be and sit within insulation layer.
- 2x15mm Gyproc Moisture Resistant Plasterboard to Bathrooms
- 2x12.5mm Gyproc SoundBloc Plasterboard to Elsewhere
- Skimmed and Decorated, All joints sealed. Paint Finish, RAL TBC
- min. 50mm Rockwool RWA45 Mineral Fibre Insulation
- Threaded M6 Bolt with M6 Locking Nut to Akustik 1 - approx. min shaft length 60/100mm (for 90/130mm void) - Bolt length to not touch CLT
- Gypframe GL1 Lining Channel at 600mm centres clipped into T47 Bracket and secured with screw
- Rockwool RWA45 to cloak unfixed perimeter to retain acoustic isolation
- Unfixed Perimeter - Gypframe GL8 Perimeter Track
- Drywall Edge Bead
- Non-hardening mastic - RAL colour to match ceiling
- 10mm Low Density Closed Cell Neoprene Foam Tape min. 45mm length to provide acoustic separation from wall

External Wall Notes to Follow